



Wandfluh AG looks to the future with IFS Cloud and Arcwide



After an implementation with best-practice consulting managed by IFS partner Arcwide, precision manufacturer Wandfluh AG has replaced a 20-year-old legacy platform with AI-enabled IFS Cloud ERP.

Based in Switzerland, Wandfluh AG serves the marine, energy and industrial markets, developing and producing precision-manufactured products and solutions. The company's product portfolio includes standard, explosion-proof, and corrosion-protected hydraulic valves; amplifier electronics and controller electronics; software development to control hydraulic valves; and design and implementation of custom hydraulic solutions.

With an industry reputation for delivering high-quality products within short delivery windows, speed and efficiency is critical. The company's 20-year-old legacy system, InERP, limited improvement and growth. It was dated and highly customized with too many individual interfaces. With no further upgrade path, Wandfluh AG began looking for a modern, fit-for-purpose replacement solution.

Explains Roger Waldburger, CEO of Wandfluh AG, "Initially we looked at offers from SAP and Microsoft Dynamics, until IFS Partner Arcwide introduced us to capabilities within IFS Cloud. We liked the modern user interfaces, the graphical data summaries and instant drill downs available with IFS Lobby dashboards. IFS is also a well-established ERP vendor for project-based production and manufacturing companies."

Embedding best practice

After evaluating and selecting IFS Cloud presented and provided by Arcwide, Wandfluh directly started the initial implementation program together with the team from Arcwide Switzerland. For the prototype based on the Swiss company, key users from all functional areas within Wandfluh, such as the sales, supply chain, manufacturing and finance as well as the technical departments, were matched with a specialist IFS consultant counterpart from Arcwide, ensuring a best-practice approach that reflected each key user's real-world business

About Wandfluh

Founded in 1946, Wandfluh AG consists of two companies in Switzerland. One develops and produces hydraulic solutions for industry, the other manufactures mechanical parts and assemblies for customers. In addition to the two Swiss companies, the Wandfluh Group also has subsidiaries in Germany, UK, USA, China, Sweden, France, Italy, and Austria.



About Arcwide

Arcwide is the largest IFS dedicated Systems Integrator globally. Established in 2022, Arcwide is an IFS Platinum Channel & Services Partner, offering comprehensive expertise across the entire IFS solution portfolio. With a team of 500+ professionals across 23 offices in 16 countries, Arcwide leverage hundreds of years of combined IFS expertise. Arcwide's premium services cover the entire journey—from solution evaluation and procurement to business consulting, implementation, application management, and value enablement.



requirements and process needs. The established solution had been implemented and rolled out to the sites in France and Austria, too, and they went live within a big bang approach together with the two sites in Switzerland in November 2023.

“We wanted to embed best practice and eliminate customization. Arcwide delivers specialist consultant resource across our key operational and process areas. Avoiding customization and using a standard out-of-the-box instance of the ERP with non-invasive customization was important. The fact that IFS is evergreen appealed to us, ensuring we can easily update the application and access the latest innovation from each software release. We were also mindful that, over the next two to three years, we want to introduce IFS internationally across our other group members in Scandinavia, Italy, the US and India. IFS is relatively easy to roll out and Arcwide could manage that for us,” says Waldburger.

Streamlining communication

Since introducing IFS, the company has been able to significantly improve communication for customer-specific project requests.

“We’re handling between 5-10 bespoke projects a month, and accuracy and speed are both key. Because IFS integrates directly into the etagis APS planning tool, the information flow between customers and Wandfluh’s sales, technical and production teams is more streamlined. It’s improved both visibility and transparency,” observes Waldburger.

The business has been live on the system since November 2023. “Clearly introducing a new system after 20 years is a big change, but one year on users are starting to see the benefits, and the advantages it offers,” says Waldburger. “We are still fine-tuning certain aspects, but I am confident that the hard work and changes will increasingly pay dividends in the months to come, especially in terms of increasing our responsiveness.”

“We wanted to embed best practice and eliminate customization. Arcwide provides specialist consultant resource across our key operational and process areas.”

Roger Waldburger, CEO, Wandfluh AG

Benefits expected with IFS Cloud

- Agile, fully configurable ERP software that is readily updatable with new releases (evergreen)
- Standard out-of-the-box box platform with minimal modification
- Open APIs supporting third-party applications and interfaces
- Access to new AI capabilities and automation
- Increased transparency, better communication and optimized processes
- Group-wide improvement through expected international implementations supported by Arcwide partner consulting

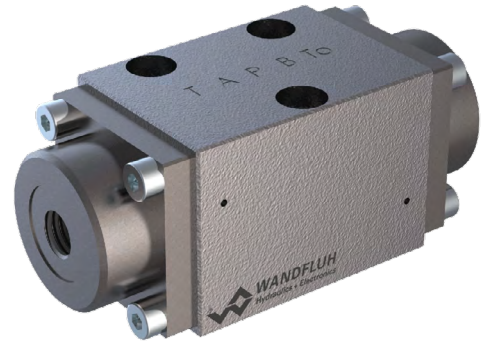
Looking ahead: global consistency to embrace AI

Looking ahead further, Waldburger sees using the same system across the group will be a big advantage. “Using IFS group wide will certainly help us accelerate our digitalization and reduce or eliminate paper-based processes. We are also excited at the opportunities and potential use cases with IFS using the embedded IFS.ai artificial intelligence capabilities. With the ability of AI agents to be self-learning, and we can see repetitive, time-consuming processes such as order acknowledgements becoming automated, saving time and increasing efficiency,” he says.

With IFS Cloud, Wandfluh AG gains a future-ready ERP solution designed to streamline operations, enhance productivity, and support growth. The platform's seamless integration capabilities, intuitive user experience, and advanced planning tools enable the company to maintain its reputation for precision, quality, and efficiency. By choosing IFS, Wandfluh AG not only addresses the challenges posed by its legacy system but also equips itself with the flexibility and scalability needed to adapt to evolving industry demands and continue delivering exceptional value to its diverse customer base.

How has using an IFS Partner to implement IFS helped? “I think a partner can add valuable expertise and resources, especially as we have access to a wide range of different consultant specialists with Arcwide,” observes Waldburger. “The quality and experience of consultants and being able to trust their knowledge and experience is key to any successful implementation. This was a decisive success factor in our collaboration with Arcwide and we would do it again.” In addition, it is important to develop in-house specialists who know the company's needs and processes in detail and can implement them precisely.

To learn more about the ways IFS and embedded IFS.ai capabilities are poised to transform operations in the manufacturing sector, visit ifs.com/manufacturing.



Find out more

Further information, e-mail info@ifs.com, contact your local IFS office or visit our web site, ifs.com

